

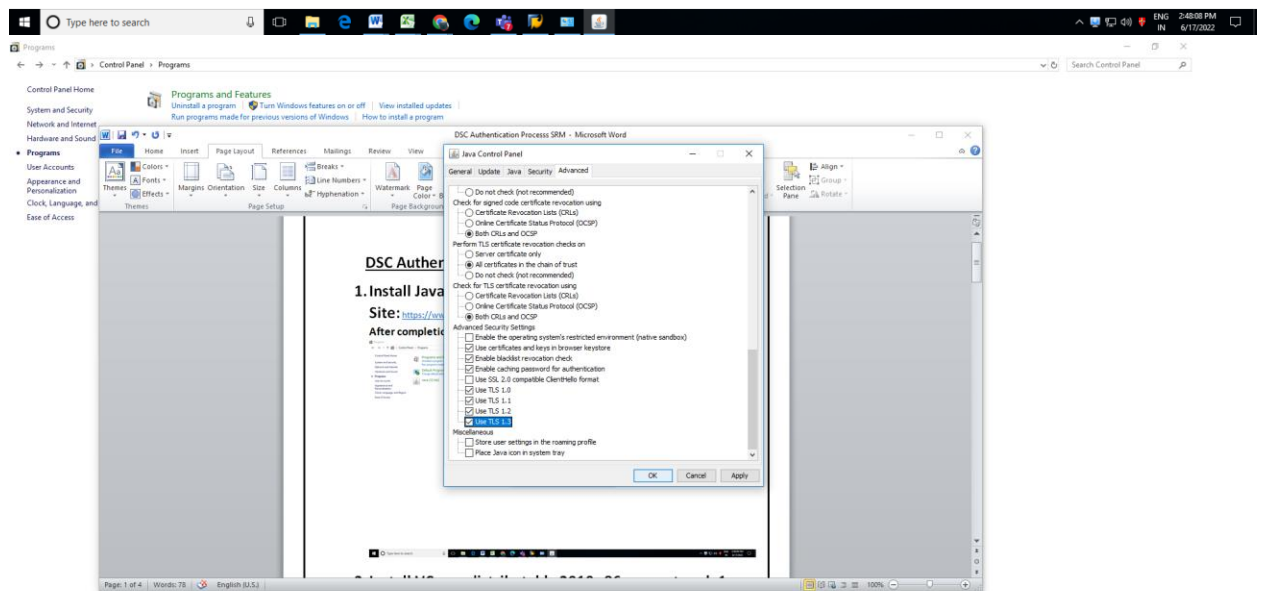
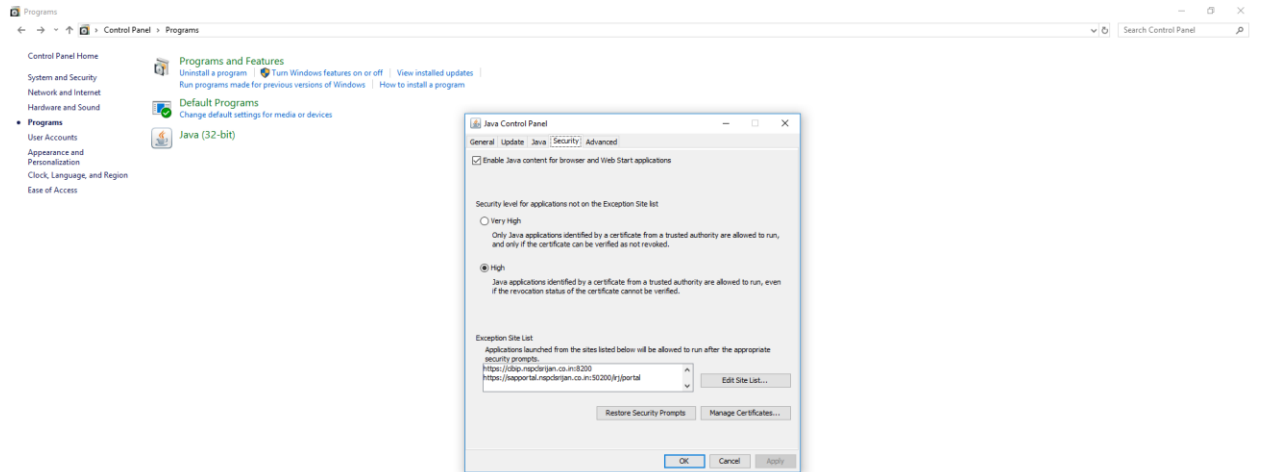
DSC Authentication Process SRM through MS Edge

1. Install Java 8 – 32 Bit

Site: https://www.java.com/download/ie_manual.jsp

After completion of download open Java-32 bit in control panel.

Include <https://sapportal.nspclsrijan.co.in:50200/irj/portal>



2. Install VC++ redistributable 2010 x86 support pack 1

Site: <https://www.microsoft.com/en-us/download/details.aspx?id=26999>

Choose the download you want

File Name	Size
<input checked="" type="checkbox"/> vcredist_x86.exe	8.6 MB
<input type="checkbox"/> vcredist_x864.exe	2.9 MB
<input type="checkbox"/> vcredist_x64.exe	9.8 MB

Download Summary:
KB18608
1. vcredist_x86.exe
Total Size: 8.6 MB

Next

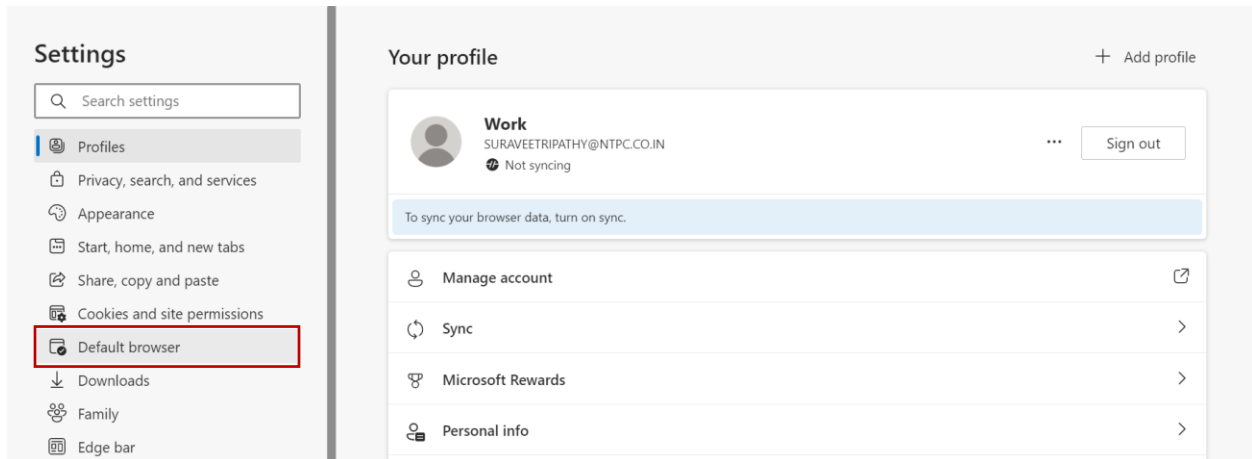
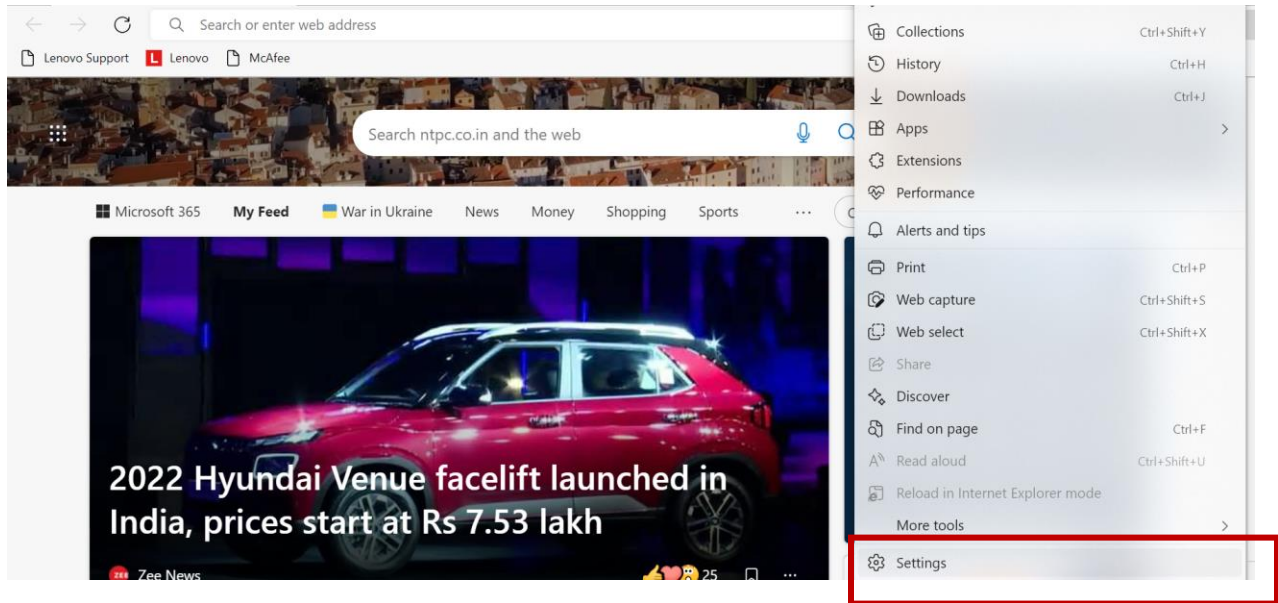
Select Language: English [v] Download

3. Install DSC

CD Drive (D:) es2003_180901

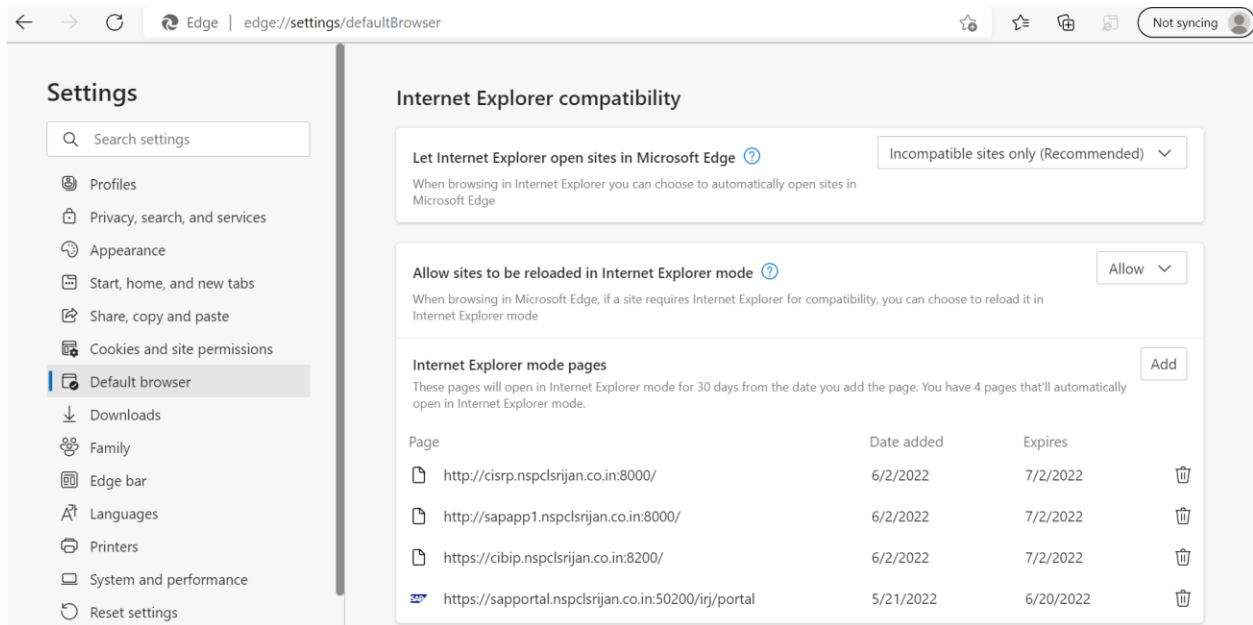
Name	Date modified	Type	Size
autorun	9/1/2018 10:13 AM	Application	17 KB
autorun	9/1/2018 10:13 AM	Setup Information	1 KB
ePass2003India-Setup	9/1/2018 10:13 AM	Application	1,975 KB

4. Microsoft Edge



Please allow these four websites to open in internet Explorer.

1. <http://cisrp.nspclsrijan.co.in:8000>
2. <http://srmapp1.nspclsrijan.co.in:8000>
3. <https://cibip.nspclsrijan.co.in:8200>
4. <https://sapportal.nspclsrijan.co.in:50200/irj/portal>



This procedure is applicable for all Windows OS.

Now your system is ready to accept DSC on SRM.

5. MS Edge to be opened as administrator

The screenshot shows the NSPCL SRM Portal website. The browser's address bar displays the URL nspcl.co.in/pages/nspcl-srm-portal. The website header includes the NSPCL logo and the text "एनटीपीसी - सेल पावर कम्पनी लिमिटेड (एनटीपीसी सेल का संयुक्त उपक्रम) NTPC-SAIL Power Company Limited (A Joint Venture of NTPC & SAIL)". A navigation menu contains links for Home, About Us, Plants, Projects, Tenders, Careers, Ash Availability, Webmail, Payments, Investors, and Contact Us. A sidebar on the left lists various categories, with "NSPCL SRM PORTAL" selected. The main content area, titled "NSPCL SRM PORTAL", lists several links: Login to SRM Portal, Registration Form, Bidders Manual, Bidder Manual for Regret Offer, Configuration Manual for DSC, SRM_Online TFE & EMD Payment Manual, SRM PC Settings, Java setting for Reverse Auction Live cockpit, and Vendor payment Status. Below these links, the SRME-tendering Helpdesk Number (0788 2282414) and E-Mail id (support.srm@nspcl.co.in) are provided. A footer section contains "Important Links" (Site Map, Hyperlinking Policy, Privacy Policy) and "Visitors Counter" information (44558958 since 1st May, 2016). The Windows taskbar at the bottom shows the Microsoft Edge icon with the "Run as administrator" context menu open, indicating the browser is being launched with administrative privileges.

6.